



INDOFINE Chemical Company, Inc.

121 Stryker Lane, Bldg. 30, Suite 1 • Hillsborough, NJ 08844 • U.S.A.

Phone: (908) 359-6778 • FAX: (908) 359-1179

website: www.indofinechemical.com

e-mail: chemical@indofinechemical.com

CERTIFICATE OF ANALYSIS

Catalog Number: A-001

Product Name: **L-ABRINE**
(N-Methyltryptophan)

CAS Number: [526-31-8]

Lot Number: 2410994

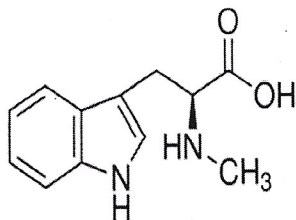
Chemical Formula: C₁₂H₁₄N₂O₂

Molecular Weight: 218.25

Appearance: White powder

Storage: Store in a cool, dry place. Keep away from strong light and heat.

Purity(HPLC): 99.92%



Prepared by:
Ramesh Mandadi
Ramesh Mandadi
Director of Operations

Reviewed and Approved by:
Sujata Moton
Sujata Moton
VP



INDOFINE Chemical Company, Inc.

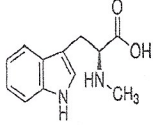
121 Stryker Lane, Bldg. 30, Suite 1 • Hillsborough, NJ 08844 • U.S.A.

Phone: (908) 359-6778 • FAX: (908) 359-1179

website: www.indofinechemical.com

e-mail: chemical@indofinechemical.com

HPLC ANALYSIS

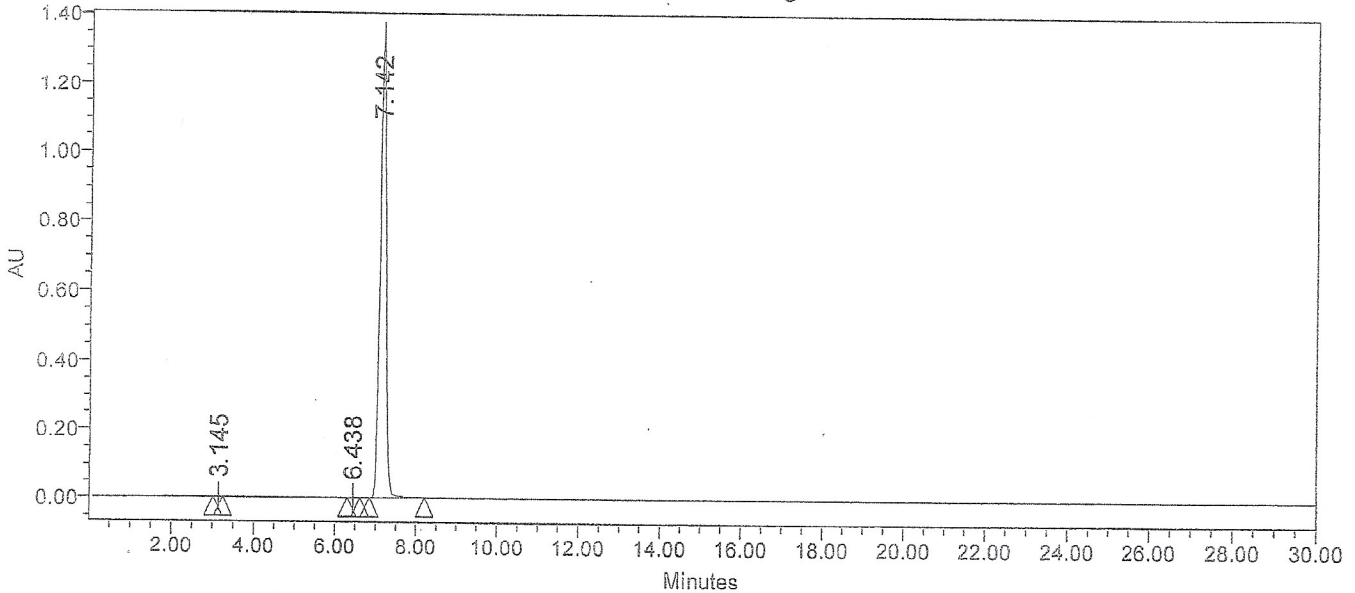


Catalog No.: A-001
Product Name: L-Abrine
Lot No.: 2410994

SAMPLE INFORMATION

Sample Name:	L-Abrine	Acquired By:	QC-LJ
Sample Type:	Unknown	Sample Set Name:	
Vial:	14	Acq. Method Set:	L Abrine
Injection #:	1	Processing Method:	L Abrine
Injection Volume:	10.00 ul	Channel Name:	280.0nm
Run Time:	30.0 Minutes	Proc. Chnl. Descr.:	W2996 PDA 280.0 nm (PDA)

Auto-Scaled Chromatogram



Peak Results

Name	RT	Area	Height	% Area
1	3.145	8075	1893	0.06
2	6.438	2657	292	0.02
3	7.142	13955043	1346930	99.92

Mobile phase A: Methanol 30
Mobile phase B: 0.05mol/L NaH₂PO₄+H₃PO₄ pH=3 Water 70
Flow rate: 0.8ml/min
Column temp: 30
Chromatographic column:Kromasil C18 250*4.6 5um

Prepared by:
Ramesh Mandadi
Ramesh Mandadi
Director of Operations

Reviewed and Approved by:
Sujata Moton
Sujata Moton
VP